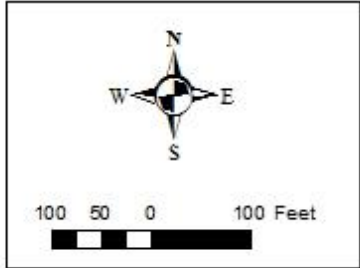


**Proposed Stairs Connecting
Charles River Pathway to
Upper Falls Greenway
Area Overview
Newton, Mass.**
Map Date: 06-10-2020

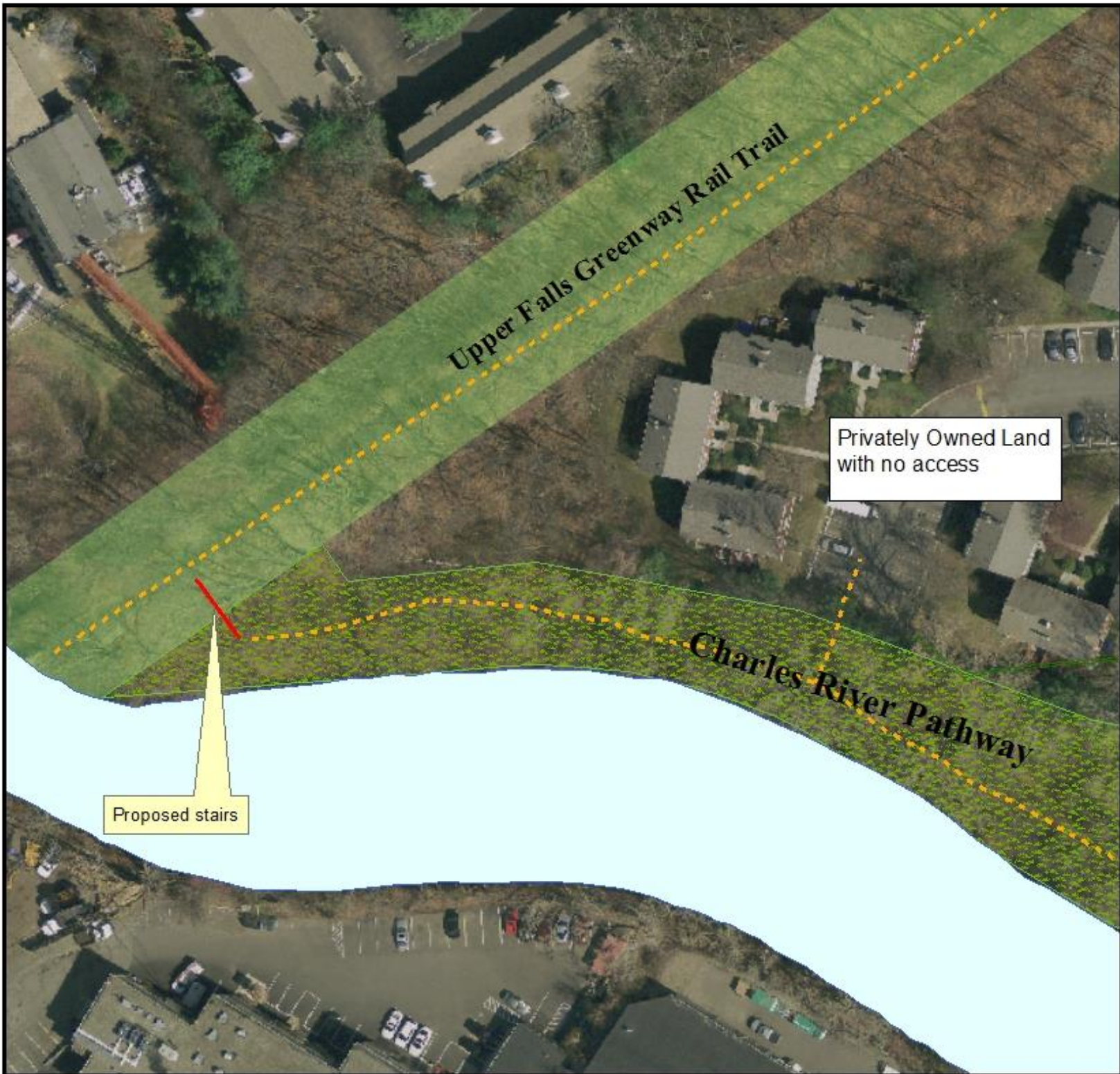


Proposed stairs

The information on this map is from the Newton Geographic Information System (GIS). The City of Newton cannot or guarantee the accuracy of this information. Each user of this map is responsible for determining its suitability for his or her intended purpose. City departments will not necessarily approve applications based solely on GIS data.

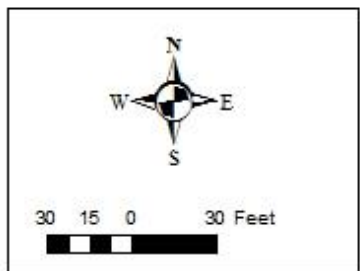


CITY OF NEWTON, MASSACHUSETTS
Mayor - Ruthanne Fuller
GIS Administrator - Douglas Greenfield



**Proposed Stairs to
Upper Falls Greenway
Area Overview
Newton, Mass.**

Map Date: 06-26-2020



- Legend**
- - - Existing Trails
 - Conservation Restriction and Public Access Easement

The information on this map is from the Newton Geographic Information System (GIS). The City of Newton cannot guarantee the accuracy of this information. Each user of this map is responsible for determining its suitability for his or her intended purpose. City departments will not necessarily approve applications based solely on GIS data.



CITY OF NEWTON, MASSACHUSETTS
 Mayor - Ruthanne Fuller
 GIS Administrator - Douglas Greenfield

**Proposed Stairs Connecting
Charles River Pathway to
Upper Falls Greenway
Stair Location Details
Newton, Mass.**

Map Date: 06-19-2020



20 10 0 20 Feet

The information on this map is from the Newton Geographic Information System (GIS). The City of Newton cannot guarantee the accuracy of this information. Each user of this map is responsible for determining its suitability for his or her intended purpose. City departments will not necessarily approve applications based solely on GIS data.



CITY OF NEWTON, MASSACHUSETTS
Mayor - Ruthanne Fuller
GIS Administrator - Douglas Greenfield

Existing Sewer & Drain Easement
City of Newton

Upper Falls Greenway

Charles River Pathway

Proposed Stair
Covering ~45 linear ft
over a ~22 ft grade change

